

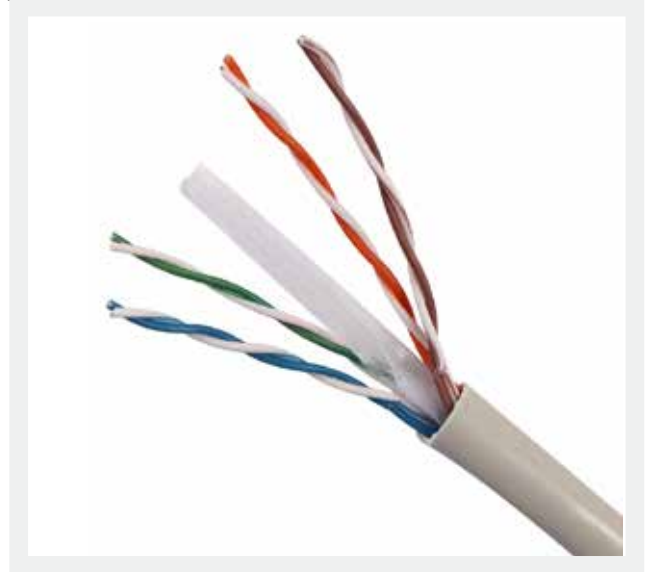


STRUCTURED  
CABLING PARTNER

## Category 6A U/UTP 4 Pair 23AWG Cable

### OPTIPLUS Optiplus Category 6A U/UTP (Unshielded Twisted Pair)

4 pair 23AWG cable is a high-speed & excellent data communication cable. It conveys high bit-rate signaling for extended distances in backbone & horizontal applications. Optiplus cables can support bandwidths up to 500 MHz and are best suitable for 10BASE-T Ethernet (10Mb/s), 100BASE-TX Fast Ethernet (100Mb/s), 1000BASE-T Gigabit Ethernet (1000Mb/s), 10GBASE-T 10 Gigabit Ethernet (10Gb/s). It can support a distance up to 100 meter (usually installed cables max. 90m, with connecting cables of up to 5m at both ends).



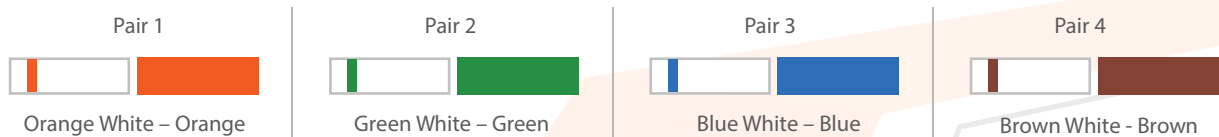
### Standards

- TIA/EIA 568-B.2-10 CAT 6A
- TIA/EIA 568-C.2 CAT 6A
- ISO/IEC 11801 Class EA
- ISO/IEC 61156-5
- IEC 61034
- IEC 60332-1
- EN50173

### Key Features:

- Tested up to 500MHz
- Guaranteed 10GBASE-T performance compliant
- Cable components are twisted into pairs with varying left-hand lays to minimize cross-talk
- PoE+ and RoHS compliant
- Standard packing will be 305 meter easy pull out box
- UL94V-0 rated plastic.
- Standard packing will be 305 meter easy pull out box.

### Colour Code:



### Cable Construction:

Conductor Material	23 AWG solid Bare Copper
Conductor Construction	Solid
Conductor Diameter	0.5mm
Insulation Material	POLYETHYLENE
Insulation Diameter	1.07mm± 0.03mm
Pairs Count	4 nos
Jacket Thickness (mm)	0.57mm ± 0.05mm
Jacket Material	PVC, Low Smoke Zero Halogen (LSZH), Plenum

## Electrical and Mechanical Characteristics:

- Impedance – 100 Ω ± 25%
- Frequency - 1 MHz to 500 MHz
- DC Resistance - 82 /Km
- Capacitance P-G - 330 pF/100m nom
- Propagation Delay Skew - 25 ns/100m Max
- Bend Radius - 55.6mm
- Operating Temperature -20°C ~ 70°C
- Installation Temperature - 0°C to 70°C
- Maximum Tensile Strength - 100 N

## Transmission Characteristics:

Freq. (MHz)	Attenuation (dB) max.	NEXT (dB) min.	PS NEXT (dB) min.	ACR dB/ 100m Min	PS-ACR dB/ 100m Min	ELFEXT (dB) min.	PSELFEXT (dB) min.	Return Loss (dB) min.
1	2.1	75.3	72.3	68	65	67	67	20
4	3.8	66.3	63.3	56	53	67	66.2	23
10	5.9	60.3	57.3	48	45	67	58.2	25
20	8.4	55.8	52.8	42	39	67	52.2	25
31.25	10.5	52.9	49.9	38.1	35.1	67	48.3	23.6
100	19.1	45.3	42.3	28	25	65.5	38.2	20.1
200	27.6	40.8	37.8	22	19	58	32.2	18
250	31.1	39.3	36.3	20	17	56.5	30.2	17.3
300	34.3	38.1	35.1	18.5	15.5	55.3	28.7	16.8
500	45.3	34.8	31.8	14	11	52	24.2	15.2

## Ordering Information:

PART NUMBER	DESCRIPTION	LENGTH
OP-C6A110023/PVC	Category6A U/UTP 4 Pair Cable PVC	305 mtr
OP-C6A110023/LSZH	Category6A U/UTP 4 Pair Cable LSZH	305 mtr
OP-C6A110023/PLM	Category6A U/UTP 4 Pair Cable Plenum	305 mtr



Optiplus Networks LLC

7950 NW 53<sup>RD</sup> Street, Suite 337,  
Miami, FL.US 33166

Email: [info@optiplusnetworks.com](mailto:info@optiplusnetworks.com)

Tel: +1 7868 716663

[www.optiplusnetworks.com](http://www.optiplusnetworks.com)