

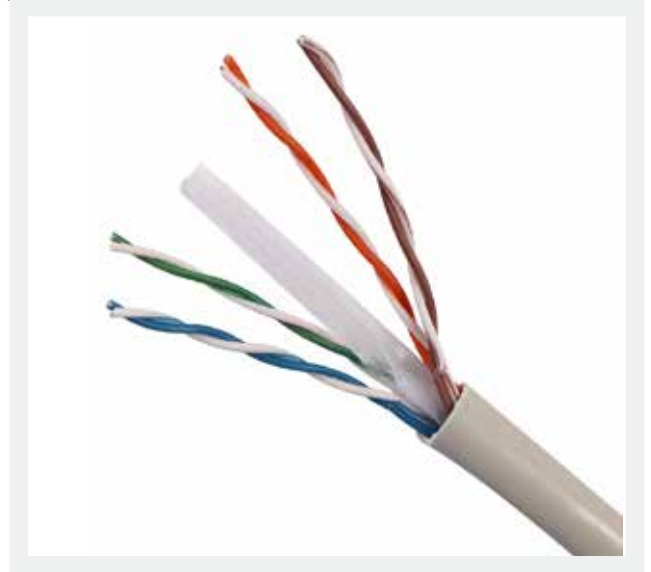


STRUCTURED
CABLING PARTNER

Category 6A U/UTP 4 Pair 23AWG Cable

OPTIPLUS Optiplus Category 6A U/UTP (Unshielded Twisted Pair)

4 pair 23AWG cable is a high-speed & excellent data communication cable. It conveys high bit-rate signaling for extended distances in backbone & horizontal applications. Optiplus cables can support bandwidths up to 500 MHz and are best suitable for 10BASE-T Ethernet (10Mb/s), 100BASE-TX Fast Ethernet (100Mb/s), 1000BASE-T Gigabit Ethernet (1000Mb/s), 10GBASE-T 10 Gigabit Ethernet (10Gb/s). It can support a distance up to 100 meter (usually installed cables max. 90m, with connecting cables of up to 5m at both ends).



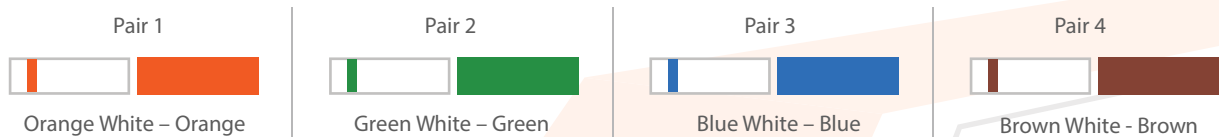
Standards

- TIA/EIA 568-B.2-10 CAT 6A
- TIA/EIA 568-C.2 CAT 6A
- ISO/IEC 11801 Class EA
- ISO/IEC 61156-5
- IEC 61034
- IEC 60332-1
- EN50173

Key Features:

- Tested up to 500MHz
- Guaranteed 10GBASE-T performance compliant
- Cable components are twisted into pairs with varying left-hand lays to minimize cross-talk
- PoE+ and RoHS compliant
- Standard packing will be 305 meter easy pull out box
- UL94V-0 rated plastic.
- Standard packing will be 305 meter easy pull out box.

Colour Code:



Cable Construction:

Conductor Material	23 AWG solid Bare Copper
Conductor Construction	Solid
Conductor Diameter	0.5mm
Insulation Material	POLYETHYLENE
Insulation Diameter	1.07mm± 0.03mm
Pairs Count	4 nos
Jacket Thickness (mm)	0.57mm ± 0.05mm
Jacket Material	PVC, Low Smoke Zero Halogen (LSZH), Plenum

Electrical and Mechanical Characteristics:

- Impedance – 100 Ω ± 25%
- Frequency - 1 MHz to 500 MHz
- DC Resistance - 82 /Km
- Capacitance P-G - 330 pF/100m nom
- Propagation Delay Skew - 25 ns/100m Max
- Bend Radius - 55.6mm
- Operating Temperature -20°C ~ 70°C
- Installation Temperature - 0°C to 70°C
- Maximum Tensile Strength - 100 N

Transmission Characteristics:

Freq. (MHz)	Attenuation (dB) max.	NEXT (dB) min.	PS NEXT (dB) min.	ACR dB/ 100m Min	PS-ACR dB/ 100m Min	ELFEXT (dB) min.	PSELFEXT (dB) min.	Return Loss (dB) min.
1	2.1	75.3	72.3	68	65	67	67	20
4	3.8	66.3	63.3	56	53	67	66.2	23
10	5.9	60.3	57.3	48	45	67	58.2	25
20	8.4	55.8	52.8	42	39	67	52.2	25
31.25	10.5	52.9	49.9	38.1	35.1	67	48.3	23.6
100	19.1	45.3	42.3	28	25	65.5	38.2	20.1
200	27.6	40.8	37.8	22	19	58	32.2	18
250	31.1	39.3	36.3	20	17	56.5	30.2	17.3
300	34.3	38.1	35.1	18.5	15.5	55.3	28.7	16.8
500	45.3	34.8	31.8	14	11	52	24.2	15.2

Ordering Information:

PART NUMBER	DESCRIPTION	LENGTH
OP-C6A110023/PVC	Category6A U/UTP 4 Pair Cable PVC	305 mtr
OP-C6A110023/LSZH	Category6A U/UTP 4 Pair Cable LSZH	305 mtr
OP-C6A110023/PLM	Category6A U/UTP 4 Pair Cable Plenum	305 mtr

Category 6A / F/UTP 4 Pair 23AWG Cable

OPTIPLUS Category 6A U/FTP (Foil Twisted Pair)

4 Pair 23AWG cables are suitable for risky environment. Optiplus U/FTP cables provide extra protection from external noise sources with excellent quality performance. Category 6A U/FTP Cable is intended for high speed data applications up to 500MHz including 10GBASE-T 10Gb/s, 1000BASE-T 1Gb/s, 1000BASE-TX 1Gb/s, ATM 155Mb/s 155Mb/s.



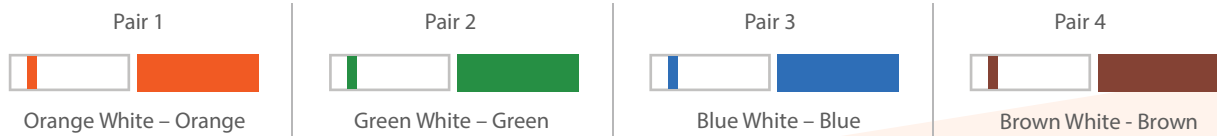
Standards

- ANSI/TIA/EIA 568 C.2 CAT 6A
- ISO/IEC 11801 Class EA
- ISO/IEC 61156-5
- IEC 60754
- IEC 61034
- IEC 60332-3C
- EN50173

Key Features:

- Tested up to 500MHz
- Individual pair shielding for EMI protection
- Supports 10 Gigabit Ethernet Application
- Minimized alien cross talk
- Outstanding signal isolation
- Standard packing will be 305 meter easy pull out box

Colour Code:



Cable Construction:

Conductor Material	23 AWG solid Bare Copper
Conductor Construction	Solid
Conductor Diameter	0.57mm± 0.05mm
Insulation Material	Foamed POLYETHYLENE
Insulation Diameter	1.38mm± 0.03mm
Foil	Aluminum Laminated Plastic Foil
Pairs Count	4 nos
Jacket Thickness (mm)	0.60mm ± 0.05mm
Jacket Material	PVC, Low Smoke Zero Halogen (LSZH), Plenum

Electrical and Mechanical Characteristics:

- Impedance – 100 Ω \pm 25%
- Frequency - 1 MHz to 500 MHz
- DC Resistance - 82 Ω /Km
- Capacitance P-G - 330 pF/100m nom
- Propagation Delay Skew - 25 ns/100m Max
- Bend Radius - 58.8mm
- Operating Temperature -20°C ~ 70°C
- Installation Temperature - 0°C to 50°C
- Maximum Tensile Strength - 100 N

Transmission Characteristics:

Freq. (MHz)	Attenuation (dB) max.	NEXT (dB) min.	PS NEXT (dB) min.	ACR dB/ 100m Min	PS-ACR dB/ 100m Min	ELFEXT (dB) min.	PSELFEXT (dB) min.	Return Loss (dB) min.
1	1.8	100	97	98	95	105	105	-
4	3.4	100	97	97	94	105	102	27
10	5.4	100	97	95	92	97	94	30
20	7.7	100	97	92	89	91	88	30
31.25	9.6	100	97	90	87	87	84	30
100	17.4	100	97	83	80	77	74	30
155.5	21.9	94	91	72	69	73	70	26
200	25	92	89	67	64	71	68	25
250	28.1	90	87	62	59	69	66	24
300	30.9	89	86	58	55	67	64	24
500	43	86	83	43	40	61	58	22

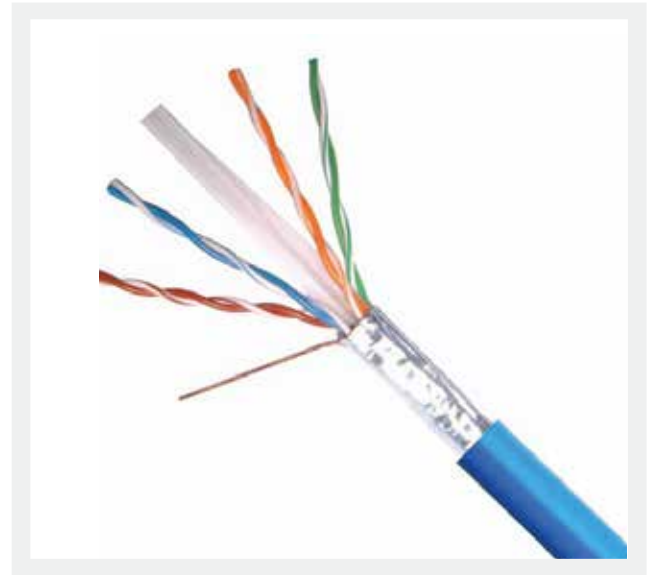
Ordering Information:

PART NUMBER	DESCRIPTION	LENGTH
OP-C6A110223/PVC	Category6A U/FTP 4 Pair Cable PVC	305 mtr
OP-C6A110223/LSZH	Category6A U/FTP 4 Pair Cable LSZH	305 mtr
OP-C6A110223/PLM	Category6A U/FTP 4 Pair Cable Plenum	305 mtr

Category 6A / U/FTP 4 Pair 23AWG Cable

OPTIPLUS Category 6A U/FTP (Foil Twisted Pair)

4 Pair 23AWG cables are suitable for risky environment. Optiplus U/FTP cables provide extra protection from external noise sources with excellent quality performance. Category 6A U/FTP Cable is intended for high speed data applications up to 500MHz including 10GBASE-T 10Gb/s, 1000BASE-T 1Gb/s, 1000BASE-TX 1Gb/s, ATM 155Mb/s 155Mb/s.



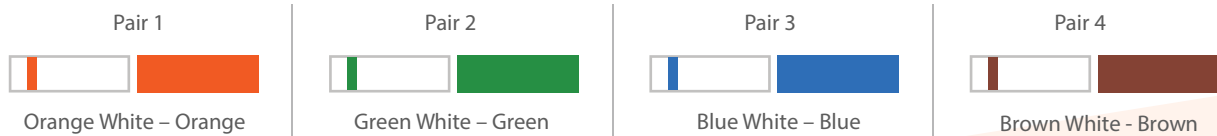
Standards

- ANSI/TIA/EIA 568 C.2CAT 6A
- ISO/IEC 11801 Class EA
- ISO/IEC 61156-5
- IEC 60754
- IEC 61034
- IEC 60332-3C
- EN50173

Key Features:

- Tested up to 500MHz
- Individual pair shielding for EMI protection
- Supports 10 Gigabit Ethernet Application
- Minimized alien cross talk
- Outstanding signal isolation
- Standard packing will be 305 meter easy pull out box

Colour Code:



Cable Construction:

Conductor Material	23 AWG solid Bare Copper
Conductor Construction	Solid
Conductor Diameter	0.57mm± 0.05mm
Insulation Material	Foamed POLYETHYLENE
Insulation Diameter	1.38mm± 0.03mm
Foil	Aluminum Laminated Plastic Foil
Pairs Count	4 nos
Jacket Thickness (mm)	0.60mm ± 0.05mm
Jacket Material	PVC, Low Smoke Zero Halogen (LSZH), Plenum

Electrical and Mechanical Characteristics:

- Impedance – 100 Ω ± 25%
- Frequency - 1 MHz to 500 MHz
- DC Resistance - 82 Ω /Km
- Capacitance P-G - 330 pF/100m nom
- Propagation Delay Skew - 25 ns/100m Max
- Bend Radius - 58.8mm
- Operating Temperature -20°C ~ 70°C
- Installation Temperature - 0°C to 50°C
- Maximum Tensile Strength - 100 N

Transmission Characteristics:

Freq. (MHz)	Attenuation (dB) max.	NEXT (dB) min.	PS NEXT (dB) min.	ACR dB/ 100m Min	PS-ACR dB/ 100m Min	ELFEXT (dB) min.	PSELFEXT (dB) min.	Return Loss (dB) min.
1	1.8	100	97	98	95	105	105	-
4	3.4	100	97	97	94	105	102	27
10	5.4	100	97	95	92	97	94	30
20	7.7	100	97	92	89	91	88	30
31.25	9.6	100	97	90	87	87	84	30
100	17.4	100	97	83	80	77	74	30
155.5	21.9	94	91	72	69	73	70	26
200	25	92	89	67	64	71	68	25
250	28.1	90	87	62	59	69	66	24
300	30.9	89	86	58	55	67	64	24
500	43	86	83	43	40	61	58	22

Ordering Information:

PART NUMBER	DESCRIPTION	LENGTH
OP-C6A110223/PVC	Category6A U/FTP 4 Pair Cable PVC	305 mtr
OP-C6A110223/LSZH	Category6A U/FTP 4 Pair Cable LSZH	305 mtr
OP-C6A110223/PLM	Category6A U/FTP 4 Pair Cable Plenum	305 mtr

Category 6A / F/FTP 4 Pair 23AWG Cable

OPTIPLUS Category 6A F/FTP (Foil Twisted Pair-Overall Foil Shield)

4 Pair 23AWG cables are applied in structured cabling system of class EA for high speed data and voice transmission, at primary, secondary (vertical) and tertiary (horizontal) level. And standardized for application up to 500MHz. CAT 6A ISDN, 10BASE-T Ethernet 10Mb/s, 100BASE-T Ethernet 100Mb/s, 1000BASE-T Gigabit Ethernet 1000Mb/s, 10GBASE-T 10 Gigabit Ethernet 10Gb/s, Token ring 16MB, FDDI, ATM. Length of this cable in 10GBASE-T networks is restricted at maximum 100m.



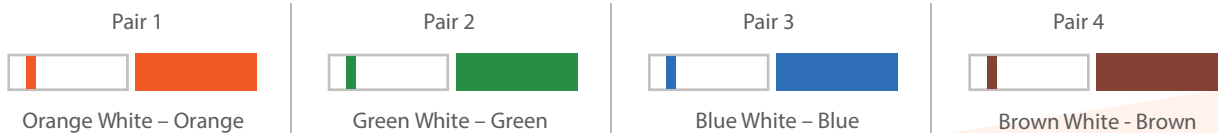
Standards

- ANSI/TIA/EIA 568 C.2CAT 6A
- ISO/IEC 11801 Class EA
- ISO/IEC 61156-5
- IEC 60332-1; IEC 60754-2; IEC 61034
- EN 50173-1; EN 50288-5-1
- EN 50290-2-27

Key Features:

- Tested up to 500MHz
- Suitable for 10GBASE-T 10 Gigabit Ethernet Applications
- Individual and overall foil screen
- Lightweight, Compact but robust Design
- Standard packing will be 305 meter easy pull out box

Colour Code:



Cable Construction:

Conductor Material	23 AWG solid Bare Copper
Conductor Construction	Solid
Conductor Diameter	0.57mm
Insulation Material	Foamed POLYETHYLENE
Insulation Diameter	1.39mm± 0.03mm
Foil	Aluminum Laminated Plastic Foil
Pairs Count	4 nos
Jacket Thickness (mm)	0.60mm ± 0.05mm
Jacket Material	PVC, Low Smoke Zero Halogen (LSZH), Plenum

Electrical and Mechanical Characteristics:

- Impedance – 100 Ω ± 25%
- Frequency - 1 MHz to 500 MHz
- DC Resistance - 82 Ω /Km
- Capacitance P-G - 330 pF/100m nom
- Propagation Delay Skew - 25 ns/100m Max
- Bend Radius - 59.7mm
- Operating Temperature -20°C ~ 70°C
- Installation Temperature - 0°C to 50°C
- Maximum Tensile Strength - 100 N

Transmission Characteristics:

Freq. (MHz)	Attenuation (dB) max.	NEXT (dB) min.	PS NEXT (dB) min.	ACR dB/ 100m Min	PS-ACR dB/ 100m Min	ELFEXT (dB) min.	PSELFEXT (dB) min.	Return Loss (dB) min.
1	1.8	100	97	98	95	105	105	-
4	3.4	100	97	97	94	105	102	27
10	5.4	100	97	95	92	97	94	30
20	7.7	100	97	92	89	91	88	30
31.25	9.6	100	97	90	87	87	84	30
100	17.4	100	97	83	80	77	74	30
155.5	21.9	94	91	72	69	73	70	26
200	25	92	89	67	64	71	68	25
250	28.1	90	87	62	59	69	66	24
300	30.9	89	86	58	55	67	64	24
500	44.8	85	82	40	37	61	58	22

Ordering Information:

PART NUMBER	DESCRIPTION	LENGTH
OP-C6A110323/PVC	Category6A F/FTP 4 Pair Cable PVC	305 mtr
OP-C6A110323/LSZH	Category6A F/FTP 4 Pair Cable LSZH	305 mtr

Category 6A / S/FTP 4 Pair 23AWG Cable

OPTIPLUS Category 6A S/FTP (Foil Twisted Pair-Shielded)

4 Pair 23AWG cable is tested up to 625MHz, the guaranteed performance of this cable meets the ISO/IEC 11801 and EN50288 requirements. This cable is intended for high speed applications 10BASE-T, 155Mb/s ATM, 4/16 Mb/s Token Ring. It is capable of carrying high bit-rate signaling for extended distances in backbone & horizontal applications.



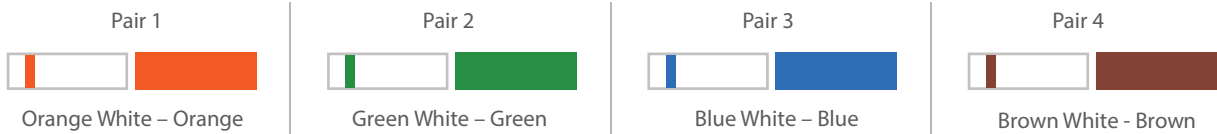
Standards

- ANSI/TIA/EIA 568 C.2CAT 6A
- ISO/IEC 11801 Class EA
- ISO/IEC 61156-5
- EN 50288-10
- EN 5173-1
- EN 50174

Key Features:

- Tested up to 625MHz
- Outstanding electrical characteristics
- Each twisted pair is shielded with metal foil (PIMF)
- Lower Bit Error, increases network efficiency and uptime
- Standard packing will be 305 meter easy pull out box

Colour Code:



Cable Construction:

Conductor Material	23 AWG solid Bare Copper
Conductor Construction	Solid
Conductor Diameter	0.57mm
Insulation Material	POLYETHYLENE
Insulation Diameter	1.39mm ± 0.03mm
Foil	Aluminum Laminated Plastic Foil
Pairs Count	4 nos
Jacket Thickness (mm)	0.60mm ± 0.05mm
Jacket Material	PVC, Low Smoke Zero Halogen (LSZH)

Electrical and Mechanical Characteristics:

- Impedance - $100 \Omega \pm 25\%$
- Frequency - 1 MHz to 625 MHz
- DC Resistance - $82 \Omega / \text{Km}$
- Capacitance P-G - $330 \text{ pF}/100\text{m nom}$
- Propagation Delay Skew - $25 \text{ ns}/100\text{m Max}$
- Bend Radius - 59.7mm
- Operating Temperature - $-20^\circ\text{C} \sim 70^\circ\text{C}$
- Installation Temperature - 0°C to 50°C
- Maximum Tensile Strength - 100 N

Transmission Characteristics:

Freq. (MHz)	Attenuation (dB) max.	NEXT (dB) min.	PS NEXT (dB) min.	ACR dB/ 100m Min	PS-ACR dB/ 100m Min	ELFEXT (dB) min.	PSELFEXT (dB) min.	Return Loss (dB) min.
1	2.1	83	80	93	90	78	75	20.5
4	3.4	83	80	93	90	78	75	23.5
10	5.9	83	80	93	90	74	71	25.5
16	7.5	83	80	93	90	69.9	66.9	25.5
31.25	10.5	83	80	90	87	64.1	61.1	24.1
62	15	80.5	77.5	86	83	58.1	55.1	22
100	19.1	77.4	74.5	83	80	54	51	20.6
250	25.4	71.4	68.4	70	67	46	43	17.8
500	31.1	69.9	63.9	57	54	40	37	17.8

Ordering Information:

PART NUMBER	DESCRIPTION	LENGTH
OP-C6A110423/PVC	Category6A S/FTP 4 Pair Cable PVC	305 mtr
OP-C6A110423/LSZH	Category6A S/FTP 4 Pair Cable LSZH	305 mtr

Category 6A U/UTP Patch Cord

OPTIPLUS Category 6A U/UTP Patch Cord ensures optimum performance from the cabling system. Optiplus factory molded patch cords are individually tested as per ANSI/TIA-568-C.2 channel standard. Patch cords are available with Cat 6A solid 23 AWG cable or Cat 6A strand Cables. Optiplus Patch Cords are manufacturing with standard compliant RJ-45 modular plugs and it is tested for transmission frequencies to 500 MHz

Standards

- TIA/EIA 568-B.2-10 CAT 6A
- TIA/EIA 568-C.2 CAT 6A
- ISO/IEC 11801 Class EA
- ISO/IEC 61156-5
- IEC 61034
- IEC 60332-1
- EN50173



Construction:

Conductor Material	23AWG Solid Bare Copper
Insulation Material	Foam Poly ethylene
Number of Conductors	8 Nos
Jacket and Boot Material	PVC/LSZH
Jacket and Boot Color	As per requirement
Cable Overall Diameter	6.0mm max.

Electrical and Mechanical Characteristics:

- Impedance - 100 ± 25%
- Frequency - 1 MHz to 500 MHz
- DC Resistance - 82 /Km
- Capacitance P-G - 330 pF/100 m nom
- Propagation Delay Skew - 25 ns/100m Max
- Operating Temperature - -20°C ~ 70°C
- Installation Temperature - 0°C ~ 50°C
- Maximum Tensile Strength - 100 N

Ordering Information:

PART NUMBER	DESCRIPTION	LENGTH
OP-C6A14002301/PVC	Category 6A U/UTP Patch Cord PVC 01m	1m
OP-C6A14002302/PVC	Category 6A U/UTP Patch Cord PVC 02m	2m
OP-C6A14002303/PVC	Category 6A U/UTP Patch Cord PVC 03m	3m
OP-C6A14002305/PVC	Category 6A U/UTP Patch Cord PVC 05m	5m
OP-C6A14002310/PVC	Category 6A U/UTP Patch Cord PVC 10m	10m
OP-C6A14002301/LSZH	Category 6A U/UTP Patch Cord LSZH 01m	1m
OP-C6A14002302/LSZH	Category 6A U/UTP Patch Cord LSZH 02m	2m
OP-C6A14002303/LSZH	Category 6A U/UTP Patch Cord LSZH 03m	3m
OP-C6A14002305/LSZH	Category 6A U/UTP Patch Cord LSZH 05m	5m
OP-C6A14002310/LSZH	Category 6A U/UTP Patch Cord LSZH 10m	10m

Category 6A F/UTP Patch Cord

OPTIPLUS Category 6A F/UTP Patch Cord ensures optimum performance from the cabling system. It is Perfect to use with Gigabit Ethernet. They comes complete RJ45 male to male Connectors and snagless molded strain relief, the extra foil shielding protects against Electro Magnetic Interference (EMI) and Radio Frequency Interference (RFI). This patch cord is tested up to 500 MHz



Standards

- TIA/EIA 568-B.2-10 CAT 6A
- TIA/EIA 568-C.2 CAT 6A
- ISO/IEC 11801 Class EA
- ISO/IEC 61156-5
- IEC 60754
- IEC 61034
- IEC 60332-3C
- EN50173

Construction:

Conductor Material	23AWG Solid Bare Copper
Insulation Material	Foam Poly ethylene
Foil	Aluminium Laminated Plastic Foil
Number of conductors	8 Nos
Jacket and Boot Material	PVC/LSZH
Jacket and Boot color	As per requirement
Cable Overall Diameter	6.0mm max.

Electrical and Mechanical Characteristics:

- Impedance - 100 ± 25%
- Frequency - 1 MHz to 500 MHz
- DC Resistance - 82 /Km
- Capacitance P-G - 330 pF/100 m nom
- Propagation Delay Skew - 25 ns/100m Max
- Operating Temperature - -20°C ~ 70°C
- Installation Temperature - 0°C ~ 50°C
- Maximum Tensile Strength - 100 N

Ordering Information:

PART NUMBER	DESCRIPTION	LENGTH
OP-C6A14012301/PVC	Category 6A F/UTP Patch Cord PVC 01m	1m
OP-C6A14002302/PVC	Category 6A F/UTP Patch Cord PVC 02m	2m
OP-C6A14002303/PVC	Category 6A F/UTP Patch Cord PVC 03m	3m
OP-C6A14002305/PVC	Category 6A F/UTP Patch Cord PVC 05m	5m
OP-C6A14002310/PVC	Category 6A F/UTP Patch Cord PVC 10m	10m
OP-C6A14002301/LSZH	Category 6A F/UTP Patch Cord LSZH 01m	1m
OP-C6A14002302/LSZH	Category 6A F/UTP Patch Cord LSZH 02m	2m
OP-C6A14002303/LSZH	Category 6A F/UTP Patch Cord LSZH 03m	3m
OP-C6A14002305/LSZH	Category 6A F/UTP Patch Cord LSZH 05m	5m
OP-C6A14002310/LSZH	Category 6A F/UTP Patch Cord LSZH 10m	10m

Category 6A S/FTP Patch Cord

OPTIPLUS Category 6A S/FTP Patch Cord has high performance and have some immunity to electromagnetic interference. Optiplus foil-over shielded twisted pair patch cables are made by high quality foil/braid shielded patch cable and RJ45 shielded connectors. Optiplus patch cords are individually tested as per ANSI/TIA-568-C.2 channel standard which are compliant with RJ-45 modular plugs and it is tested for transmission frequencies of up to 625 MHz

Standards

- ANSI/TIA/EIA 568 C.2 CAT 6A
- ISO/IEC 11801 Class EA
- ISO/IEC 61156-5
- EN 50288-10
- EN 5173-1
- EN 50174



Construction:

Conductor Material	23AWG Solid Bare Copper
Insulation Material	Poly ethylene
Overall shield	Tinned copper braid
Foil	Aluminum Laminated Plastic Foil
Number of conductors	8 Nos
Jacket and Boot Material	PVC/LSZH
Jacket and Boot color	As per requirement
Cable Overall Diameter	6.0mm max.

Electrical and Mechanical Characteristics:

- Impedance - 100 ± 25%
- Frequency - 1 MHz to 625 MHz
- DC Resistance - 82 /Km
- Capacitance P-G - 330 pF/100 m nom
- Propagation Delay Skew - 25 ns/100m Max
- Operating Temperature - -20°C ~ 70°C
- Installation Temperature - 0°C ~ 50°C
- Maximum Tensile Strength - 100 N

Ordering Information:

PART NUMBER	DESCRIPTION	LENGTH
OP-C6A14042301/PVC	Category 6A S/FTP Patch Cord PVC 01m	1m
OP-C6A14042302/PVC	Category 6A S/FTP Patch Cord PVC 02m	2m
OP-C6A14042303/PVC	Category 6A S/FTP Patch Cord PVC 03m	3m
OP-C6A14042305/PVC	Category 6A S/FTP Patch Cord PVC 05m	5m
OP-C6A14042310/PVC	Category 6A S/FTP Patch Cord PVC 10m	10m
OP-C6A14042301/PVC	Category 6A S/FTP Patch Cord LSZH 01m	1m
OP-C6A14042302/PVC	Category 6A S/FTP Patch Cord LSZH 02m	2m
OP-C6A14042303/PVC	Category 6A S/FTP Patch Cord LSZH 03m	3m
OP-C6A14042303/PVC	Category 6A S/FTP Patch Cord LSZH 05m	5m
OP-C6A14042310/PVC	Category 6A S/FTP Patch Cord LSZH 10m	10m

Category 6A UTP Patch Panels (Loaded)

OPTIPLUS Category 6A Patch Panels are developed for high-speed data, voice and image transmission. These patch panels offer termination using the latest in tool free keystone jack technology. The use of an insertion tool is not required while terminating these panels. All 8 wires can be loaded and termination simultaneously, drastically reducing installation time.

Standards

- ANSI/TIA-568-C.2
- ANSI/TIA-1096-A:2002
- ISO/IEC 11801 Ed.2.2
- IEEE 802.3an
- IEEE 802.3af (PoE)
- IEEE 802.3at (PoE+)
- IEC 60603-7
- IEC 60603-7-41



Key Features:

- 6 Port component modules.
- Terminate from 26-22 AWG solid CAT6 A cable
- Designated space for custom labeling.
- Integrated rear cable manager ensures proper cable management.
- Port numbering enables quick identification of outlets.
- Housing: ABS 94V-0/1/2.
- IDC Contact: 0.35 mm (0.014") phosphor bronze with gold plating on contact area.
- Panel size : 19" with 1u.

Ordering Information:

PART NUMBER	DESCRIPTION	PORTS
OP-C6A120024	Category 6A UTP loaded patch panel - 1u	24
OP-C6A120048	Category 6A UTP loaded patch panel - 2u	48

Category 6A STP Patch Panels (Loaded)

OPTIPLUS Category 6A Patch Panels is developed for high-speed data, voice and image transmission. The shielded patch panels are loaded with shielded keystone jacks, which are housed in a closure full shielding metal enclosure designed to meet highest industry requirement. A shielded version is also available to maximum protection from EMI/RFI interference. By utilizing fully shielded jacks and connecting hardware, you can reduce the effects of interference on the network data transmissions.



Standards

- ANSI/TIA-568-C.2
- ANSI/TIA-1096-A
- ISO/IEC 11801 Ed.2.2
- IEEE 802.3an
- IEEE 802.3af (PoE)
- IEEE 802.3at (PoE+)
- IEC 60603-7
- IEC 60603-7-41

Key Features:

- Rugged cast-encased keystone jack design is durable and simple to use
- Quick tool-less termination process is user- friendly and reduces installation times
- Rear loading design supports preferred practice for terminating and assembling jacks into panels
- Sturdy Aluminum Plate around RJ 45 Jacks
- Phosphor bronze with 6-50 micro inches gold plated
- Termination accepts 22- 26 AWG solid Cat6 A cables
- Metal sheet: Corrosion resistant steel

Ordering Information:

PART NUMBER	DESCRIPTION	PORTS
OP-C6A120024S	Category 6A STP loaded patch panel - 1u	24
OP-C6A120048S	Category 6A STP loaded patch panel - 2u	48

Category 6A Patch Panels (Un Loaded)

OPTIPLUS Category 6A Patch Panels (Un-Loaded) are designed to mount in any standard 19" width rack. Optiplus patch panel are used to fit your customized network or multimedia systems which jacks offers an attractive appearance combined with flexible labeling options. These panels have blank slots for fitting in keystone jacks.

Key Features:

- Rugged design and simple to use
- Available in 24 ports with 1u.
- Integrated rear cable manager ensures proper cable management
- Easy port labeling identification provision
- Numeral marking of ports on the front side of the panel
- Fits to any standard 19" rack
- Metal sheet: Corrosion resistant steel



Ordering Information:

PART NUMBER	DESCRIPTION	PORTS
OP-C6A120024/UL	Category 6A UTP Un loaded patch panel - 1u	24
OP-C6A120024S/UL	Category 6A STP Un loaded patch panel - 1u	24

Category 6A UTP Keystone Jack Tool less

OPTIPLUS Category A6 UTP Keystone Jack Tool less is designed for superior performance in high-speed Data, voice and image transmission. This series keystone jacks work together with high speed cables, cords and panels to provide performance beyond proposed Category 6 standards, a new feature of this series jack is a universal colored wiring label that eliminates the need for separate codes for T568A/B wiring scheme.

Standards

- ANSI/TIA/EIA 568-C.2
- ISO/IEC11801:Amend 2:2010
- EN50173

Key Features:

- Multi-purpose keystone design
- High reliability and superior performance
- Easy to be terminated, low attenuation loss and high return loss
- Protection cap protects conductor termination points and controls cable entry
- Balances signal transmission of insertion loss and crosstalk from 1 to 500 MHz
- Suitable for 22-26AWG stranded and solid wire



Design & Materials:

Colour	White/Black
Size	17mm x 35.15mm x 25.20mm
Angle	90 Degree , 180 Degree
Housing Material	High impact thermoplastic, UL94V-0
IDC	Phosphor Bronze with 50 micro-inch Gold plating over 50-60 micro-inch Nickel Plated
IDC contact area	min. 3MM 50 micro-inch gold plated over nickel plated
IDC Type	Tool free with cap
Temperature-Storage	-40 - +70°C
Temperature-Operation	0°C - +65°C
Colour Coding	As Per 568 A/B Standard

Electrical and Mechanical Characteristics:

- Insertion Life : 750 cycles minimum
- Retention Force : 50 N
- Propagation Delay : 2.5nsec max./1-500MHz
- Current Rating: 2.1 Amps
- Insulation Resistance: 500 m Ω min
- Spring wire contact resistance : 20 m Ω MAX
- IDC contact resistance : 2.5 m Ω MAX

Ordering Information:

PART NUMBER	DESCRIPTION
OP-C6A130090TL	Category6A UTP Keystone Jack 90° Tool Less
OP-C6A130080TL	Category6A UTP Keystone Jack 180° Tool Less

Category 6A STP Keystone Jack Tool less

OPTIPLUS Category 6A STP Keystone Jack Tool less

is designed for superior performance in high-speed Data, voice and image transmission which exceeds the transmission line performance requirements of IEC and TIA for CLASS EA/Category 6A systems.

Their compact design has been engineered to optimize density in high performance applications such as Data Centers. Designed for mechanical and electrical reliability, using quality materials, to deliver a jack solution that minimizes the time required by the installer to complete each termination



Standards

- ANSI/TIA/EIA 568-C.2
- ISO/IEC11801:Amend 2:2010
- EN50173

Key Features:

- Multi-purpose keystone design
- High reliability and superior performance
- Easy to be terminated, low attenuation loss and high return loss
- Protection cap protects conductor termination points and controls cable entry
- Module can be re-opened and re-installed
- Balances signal transmission of insertion loss and crosstalk from 1 to 500 MHz
- Suitable for 22-26AWG stranded and solid wire

Design & Materials:

Colour	Silver
Size	17mm x 41.15mm x 26.20mm
Angle	180 Degree
Housing Material	Zinc
IDC	Phosphor Bronze with 50 micro-inch Gold plating over 50-60 micro-inch Nickel Plated
IDC contact area	min. 3MM 50 micro-inch gold plated over nickel plated
IDC Type	Tool free with cap
Temperature-Storage	-40 - +70°C
Temperature-Operation	0°C - +65°C
Colour Coding	As Per 568 A/B Standard

Electrical and Mechanical Characteristics:

- Insertion Life : 750 cycles minimum
- Retention Force : 50 N
- Propagation Delay : 2.5nsec max./1-500MHz
- Current Rating: 2.1 Amps
- Insulation Resistance: 500 m Ω min @ 100V DC
- Spring wire contact resistance : 20 m Ω MAX
- IDC contact resistance : 2.5 m Ω MAX

Ordering Information:

PART NUMBER	DESCRIPTION
OP-C6A130080STL	Category6 STP Keystone Jack 180° Tool Less



Optiplus Networks LLC

7950 NW 53RD Street, Suite 337,
Miami, FL.US 33166

Email: info@optiplusnetworks.com

Tel: +1 7868 716663

www.optiplusnetworks.com