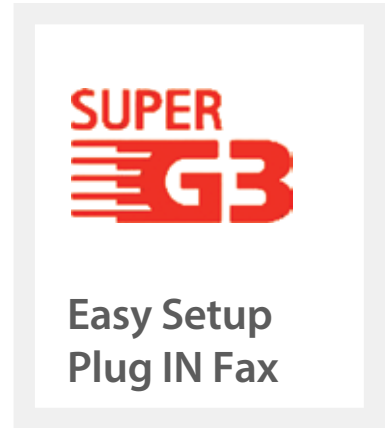




OPTIPLUS NETWORK
FAX SERVER V.34

OPTIPLUS Network Fax Server

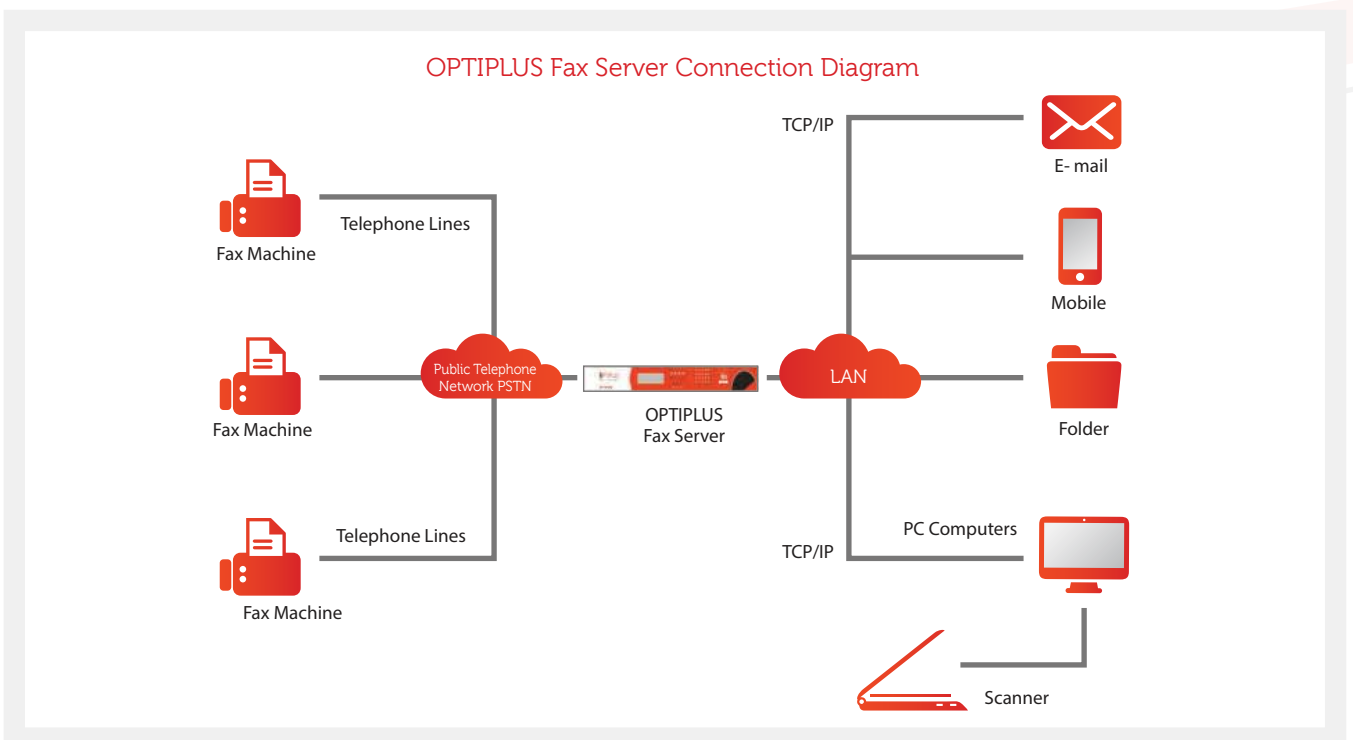
OPTIPLUS Network Fax Server



OPTIPLUS Fax Server Overview

The **OPTIPLUS** Network Fax Server is a complete, highly economical, easy-to-use network fax server. It was designed to meet the needs of small to mid-sized businesses or workgroups, and comes with all the necessary hardware and software to allow network users to send and receive faxes from the desktop or browser.

OPTIPLUS Network Fax Server is a turnkey solution that connects to PSTN fax lines. It provides both software and web management interface, and allows you to receive faxes wherever you are as e-mails and send faxes from any application that can print. The system provides distributed faxing capabilities, over a WAN, from a corporate office to small remote offices as well as to field sales people. By PRO series **OPTIPLUS** Network Fax Server V.34 Network Fax Server, it offers V.34/33.6K Super G3 fax and JBIG fax compression, reduces fax transmission time by more than half when compared to traditional fax modems. The result is faster fax transmissions and significant cost savings over time.



Main Functions:

Send and Receive Fax

Automatic Format Conversion

The user can send fax by selecting Network Fax Server printer to convert the current document to fax format.

Fax Queue

All faxes will be queued within Network Fax Servers fax queue. It has priority code to indicate the priority of the fax. Urgent fax will send out by next available line.

Delay Fax Sent

Users can send faxes by specified time

V.34/ 33.6kbps Fax Speed *

With speeds capable of 33.6kbps and JBIG compression that transmission faxes faster.

Fax Broadcast

Users may also be able to send the fax document to a number of different users. Fax Broadcast result can export to Excel format.

Fax Resend

When the fax destination is busy or no answer, Network Fax Server will queue for resend. Users can set up the retry times in the software.

Inbound Fax Routing

Network Fax Server will route the fax according to sender's input of the fax mailbox number and automatically route to users mailbox.

Fax Status

The system automatically indicate real time fax status on top of web interface. It helps user to identify the fax line situation.

Fax to Email

All received fax will be automatically send to user's folder. It also can setup to send to email account by attachment with TIFF format.

Email to Fax

User can send fax from anywhere with internet connection. Just add the attachment to email and our fax server will automatically converts your email into fax and forwards it to the destination fax machine.

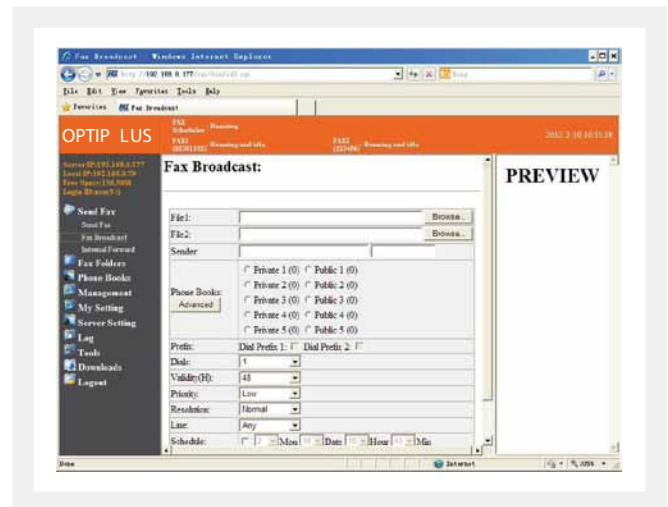
Fax to Print

All received faxes can be printed out automatically.

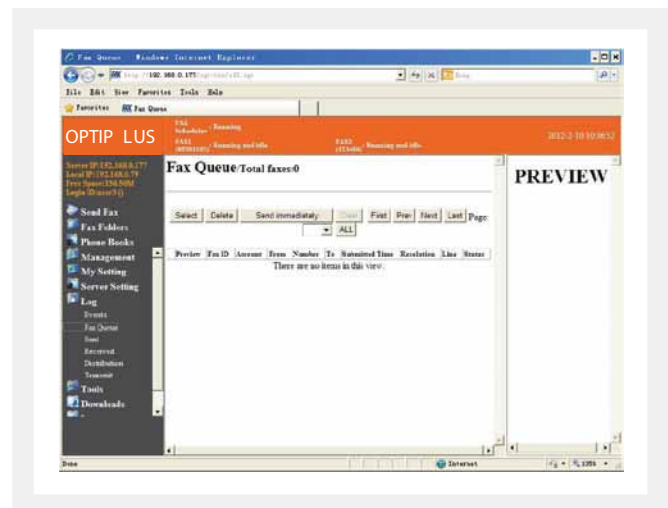
Fax to Folder

The sent and received faxes will be stored in any share folder specified by user

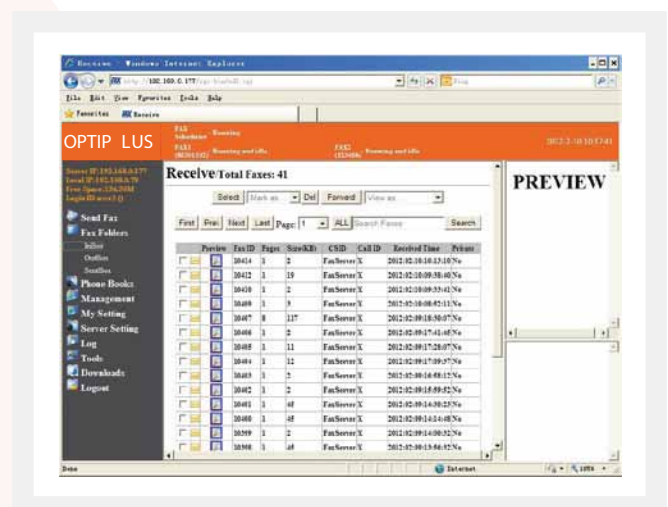
Fax Broadcast:



Fax Queue:



InBox:



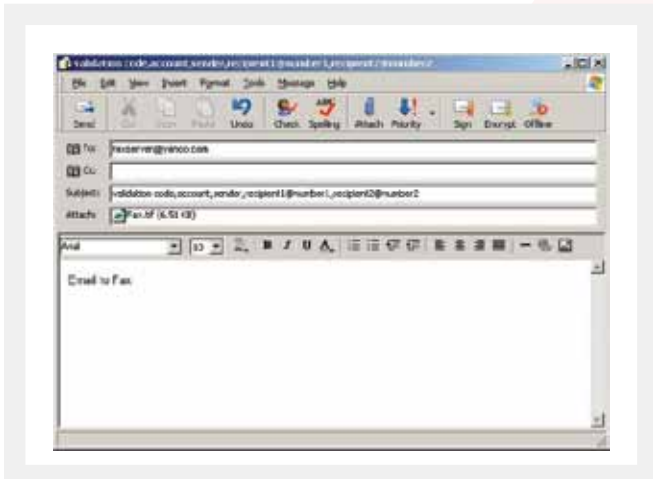
○ Print2Fax

The Network Fax Server allows users to compose a fax from any application that utilizes a printer. To send, users simply “print” the document to the application. Let sending fax is easy as printing.

Print2Fax Interface:



Email2Fax:



System and Management

○ User Management

Administrators can set up different user accounts passwords, management authority, attributes, lines, document format and email address.

○ Address Book

Network Fax Server has its own address books – both shared and private to each user. Contacts may be grouped together into fax lists for rapid dissemination of information using just a few clicks.

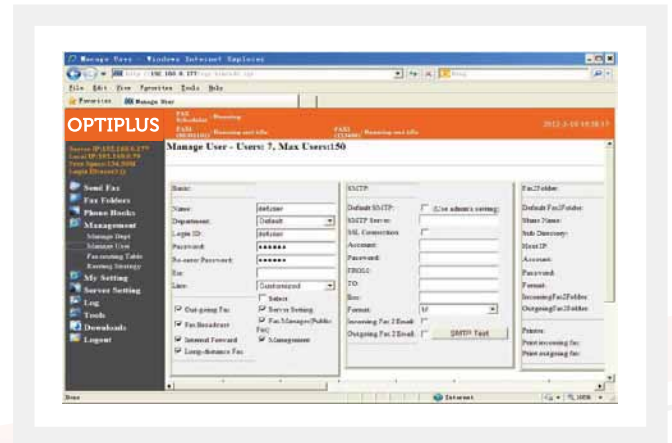
○ Fax Monitoring

Administrators can monitor all incoming or outgoing faxes.

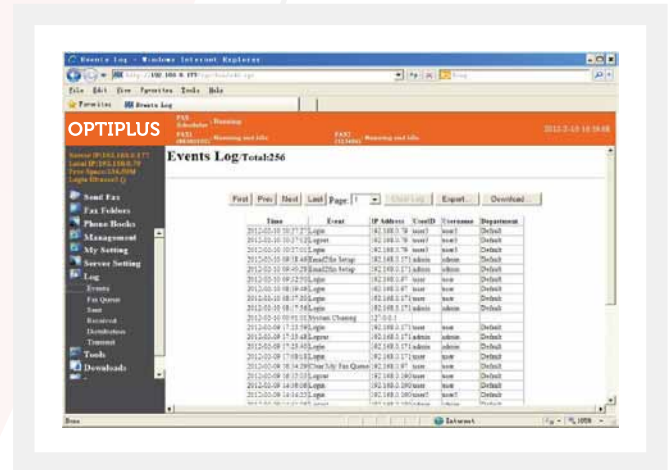
○ System Log

Network Fax Server provides various system log for administrator. Included user login and modify log, fax sent log, received fax log, fax distribution log and internal transmit log. All logs can export to excel format.

User Management:



Event Log:



Introduction to V.34 High-Speed Fax

Dubbed "V.Fast", the V.34 fax standard is heralded as an important development in fax technology. Fax devices supporting the V.34 protocol also can deliver more reliable fax transmission, requiring fewer resends, under a wider range of line conditions than those supporting older fax standards such as V.17 and 9.6 kbps.

The adoption of the V.34 standard allows:

- Data rate of up to 33.6Kbps, more than twice the speed of its predecessor, V.17 (14.4Kbps)
- Support fast handshaking, which can cut call setup and session-management time by one-third.
- High-speed transmission enables transport of color fax data

What is the ITU-T V.34 Fax Standard

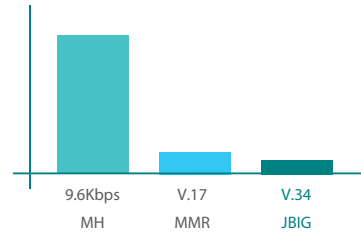
The V.34 fax standard was derived from the V.34 data modem standard established by the International Telecommunications Union (ITU). The V.34 data modem standard is a full-duplex implementation for sending and receiving data across telephone lines with a maximum data rate of 33.6Kbps. Certain elements of the V.34 data modem standard were eliminated for V.34 fax while new features, such as a control channel and mandatory ECM, were added to enable fast and reliable fax transmission.

Data Rates Supported (Kbps)	ITU Standard		
	V.27&V.29	V.17	V.34
2.4	√		√
4.8	√		√
7.2	√	√	√
9.6	√	√	√
12		√	√
14.4		√	√
16.8			√
19.2			√
21.6			√
24			√
26.4			√
28.8			√
31.2			√
33.6			√

Comparison between Fax Modulation Speeds
Source www.gaoresearch.com

JBIG Compression

JBIG is the most effective compression (up to 80% better), and an average document when compressed using JBIG becomes 1/20th of the original size. The main features of JBIG are:



Relative transmission times
(compression effect varies on content type)
Source www.mainpine.com

- Lossless compression of one-bit-per-pixel image data.
- Ability to encode individual bitplanes of multiple-bit pixels.
- Progressive or sequential encoding of image data.

Transmission times

The table below shows the time it takes to transmit a 4 page fax using 9.6k, v.17 and V.34 Super G3. These figures account for the connection, transmission and retraining times.

In seconds	9.6 kbps	V.17	V.34
Handshake	16	16	7
Page 1 (3%)	18	12	5
Retraining	6	6	0.25
Page 2 (6%)	27	18	7
Retraining	6	6	0.25
Page 3 (6%)	27	18	7
Retraining	6	6	0.25
Page 4 (12%)	54	36	14
Retraining	6	6	0.25
TOTAL	166 seconds	124 seconds	41 seconds

Average Fax Transmission Times (4-Page Fax)
Source www.brooktrout.com

For the fax being sent using V.34, once the handshaking is completed, the first page is transmitted at 33.6 Kbps. This means that the first page of a typical four-page fax will transmit in seven seconds, versus 16 seconds with the older technology. For the example of the four-page fax transmission, the transmission time can vary from 166 seconds with a 9.6 Kbps modem, to only 41 seconds using V.34 fax technology, saving more than two minutes per call on average.

The V.34 protocol is highly adaptive, automatically and intelligently applying the optimum combination of modulation methods and impairment-compensation techniques for each fax call. The result is faster fax transmissions and significant cost savings over time.

Main Feature

Easy Installation and Cost Effectively

OPTIPLUS fax server is one time purchase product, it meets all network fax function you need, like Fax2Email, Fax Broadcast. It includes all required fax hardware, software and web fax management, fax client software. You don't have to worry about the fax modem and fax software compatibility.

Desktop Faxing

OPTIPLUS Fax Server allows you to deploy faxing to your entire user base so that they can send and receive faxes while sitting at their desks.

Operate Independently

System running completely out of the computer. No server side software required. Fax stored in Network Fax Server.

PBX Integration

After installing Network Fax Server behind PBX, It is able to listen DTMF code generated from PBX system. So fax can be delivered via PBX setting or analog DID/DDI service.

V.34 SuperG3 Support *

OPTIPLUS Fax Server support V.34 SuperG3 fax enabling transmission speeds of 33.6Kbps for superior performance. Reduce costs.

Network Fax Sharing

OPTIPLUS Fax Server runs in TCP/IP network. User can share faxes and files within local LAN or even internet. It save time to deliver fax and save cost as well.

CSID Support

User can identify the source of fax. It help to manage faxes more intuitive and more convenient.

Caller ID Support

Route all matched CID (telephone number routing) faxes to specify the user.

Fax Backup

Fax Backup allows to store and backup the received or sent faxes to any share folder in server or PC automatically.

Network Printing

It supports the received faxes to be printed out via network printing automatically.

Income Fax Auto Routed

All income fax are auto-routed by rule, It can be directly to desktop fax client, email, share folder.

Virtual Fax Extension

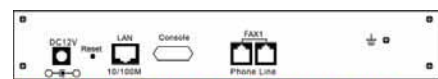
OPTIPLUS Fax Server allow you to create Virtual Fax Extension for single user or department, with DID integration, faxes will directly send to each user's email box.

Product Specifications:

Model	FS100	FS100G	FS200	FS200G	FS400	FS400G
Fax Line	1		2		4	
Max. User	100		150		200	
Memory	256M		256M		512M	
Fax Storage	4000pages		4000pages		8000pages	
Network	TCP/IP					
Network	RJ45					
Network	10/100M					
Fax Line	RJ11					
Fax Line Type	PSTN					
Fax Speed	33.6k* / 14.4K / 12K / 9.6K / 7.2K / 4.8K / 2.4K					
Fax	98 / 196DPI					
Fax	JBIG*, MMR, MR, MH					
Fax Standard	SIP T.38, Super G3*, ITU-T G3 / G4					
Fax Routing	Line / CSID / Extension / Caller ID					
DID/DDI Digit	(User Define 1,2,3,.....,25)					
OS Support	MS Windows / Mac / Linux					
Browser	IE / Firefox / Netscape					
Language	English, Chinese, French, Arabic, Turkish, Spanish, Italian					
Remote	Support					
Document	TIFF					
Rack Mount	No		Yes			
Dimension	200x13	280x150x	200x130	280x150	450x235	450x235x4
Power Supply	External 12V DC,1A			90-240V AC		
Gross Weight	1.0K	2.0KG	1.1K	2.0KG	4.0KG	4.0KG
Approval	CE ,FCC					



Back Panel:



OPTIPLUS FS100 & FS100G BACK PANEL



OPTIPLUS FS200 & FS200G BACK PANEL



OPTIPLUS FS400 & FS400G BACK PANEL



FS100

Ordering Information

PART NUMBER	NO OF LINES
OP-FS-100G	1
OP-FS-200G	2
OP-FS-400G	4